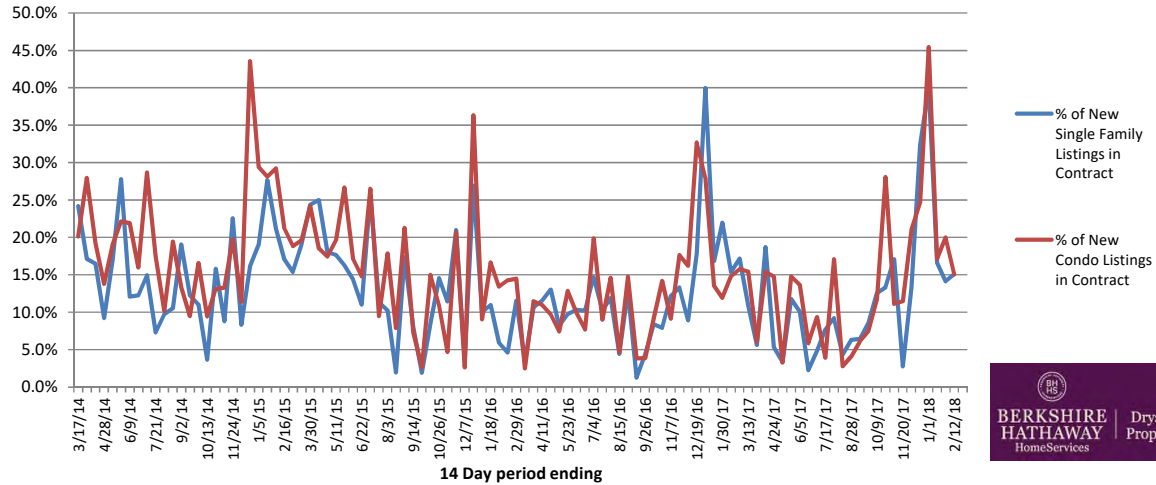


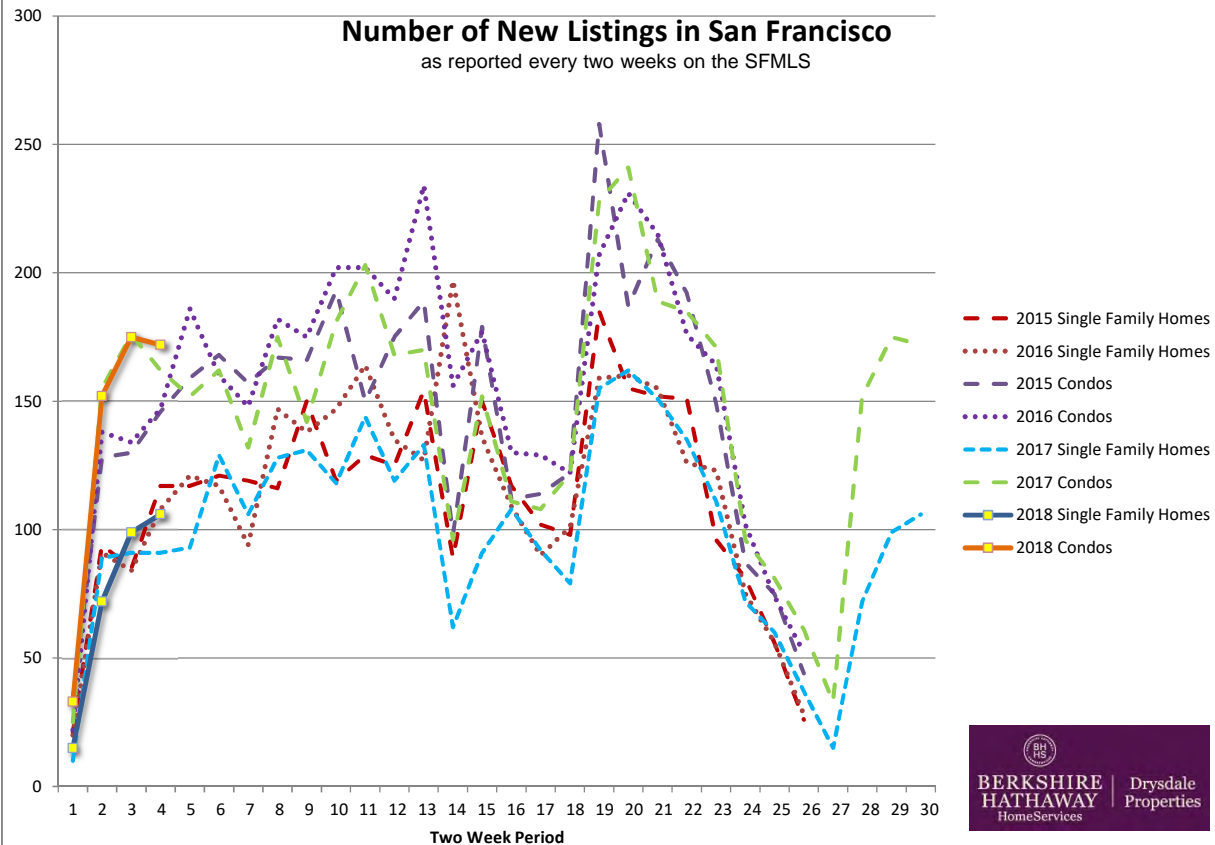
## New Listing Market Watch

14 Day Period through date	Single Family Homes			Condominiums			Price Reductions		Total New Listings
	New Listings	New Listings in Contract	% of New Single Family Listings in Contract	New Listings	New Listings in Contract	% of New Condo Listings in Contract	Single Family Homes	Condos	
Jan 4, 2016	20	2	10.0%	22	2	9.1%	1	1	42
Jan 18, 2016	91	10	11.0%	138	23	16.7%	4	3	229
Feb 1, 2016	84	5	6.0%	134	18	13.4%	0	13	218
Feb 15, 2016	108	5	4.6%	147	21	14.3%	10	11	255
Feb 29, 2016	121	14	11.6%	186	27	14.5%	10	22	307
Mar 14, 2016	117	4	3.4%	160	4	2.5%	12	28	277
Mar 28, 2016	94	10	10.6%	148	17	11.5%	16	20	242
Apr 11, 2016	147	17	11.6%	182	20	11.0%	20	34	329
Apr 25, 2016	138	18	13.0%	175	17	9.7%	11	47	313
May 9, 2016	147	12	8.2%	202	15	7.4%	29	66	349
May 23, 2016	164	16	9.8%	202	26	12.9%	32	45	366
Jun 6, 2016	135	14	10.4%	190	19	10.0%	22	46	325
Jun 20, 2016	127	13	10.2%	234	18	7.7%	23	48	361
Jul 4, 2016	197	29	14.7%	156	31	19.9%	55	41	353
Jul 18, 2016	136	14	10.3%	177	16	9.0%	20	39	313
Aug 1, 2016	109	13	11.9%	130	19	14.6%	28	42	239
Aug 15, 2016	90	4	4.4%	129	6	4.7%	22	33	219
Aug 29, 2016	101	13	12.9%	122	18	14.8%	20	24	223
Sep 12, 2016	159	2	1.3%	207	8	3.9%	10	35	366
Sep 26, 2016	160	7	4.4%	231	9	3.9%	21	59	391
Oct 10, 2016	155	13	8.4%	215	20	9.3%	25	46	370
Oct 24, 2016	126	10	7.9%	176	25	14.2%	28	78	302
Nov 7, 2016	123	15	12.2%	164	15	9.1%	26	62	287
Nov 21, 2016	75	10	13.3%	102	18	17.6%	19	46	177
Dec 5, 2016	56	5	8.9%	74	12	16.2%	10	19	130
Dec 19, 2016	28	5	17.9%	52	17	32.7%	11	20	80
Jan 2, 2017	10	4	40.0%	25	7	28.0%	0	2	35
Jan 16, 2017	89	15	16.9%	155	21	13.5%	1	15	244
Jan 30, 2017	91	20	22.0%	176	21	11.9%	1	12	267
Feb 13, 2017	91	14	15.4%	162	24	14.8%	10	21	253
Feb 27, 2017	93	16	17.2%	152	24	15.8%	8	27	245
Mar 13, 2017	129	14	10.9%	162	25	15.4%	10	28	291
Mar 27, 2017	106	6	5.7%	132	8	6.1%	13	24	238
Apr 10, 2017	128	24	18.8%	175	27	15.4%	15	20	303
Apr 24, 2017	131	7	5.3%	142	21	14.8%	17	27	273
May 8, 2017	118	4	3.4%	181	6	3.3%	21	36	299
May 22, 2017	144	17	11.8%	203	30	14.8%	16	39	347
Jun 5, 2017	119	12	10.1%	168	23	13.7%	20	38	287
Jun 19, 2017	133	3	2.3%	170	10	5.9%	22	33	303
Jul 3, 2017	62	3	4.8%	96	9	9.4%	14	31	158
Jul 17, 2017	91	7	7.7%	152	6	3.9%	16	41	243
Jul 31, 2017	108	10	9.3%	111	19	17.1%	16	16	219
Aug 14, 2017	92	4	4.3%	108	3	2.8%	4	29	200
Aug 28, 2017	79	5	6.3%	122	5	4.1%	5	21	201
Sep 11, 2017	155	10	6.5%	228	14	6.1%	11	31	383
Sep 25, 2017	162	14	8.6%	241	18	7.5%	17	34	403
Oct 9, 2017	151	19	12.6%	189	22	11.6%	18	49	340
Oct 23, 2017	135	18	13.3%	185	52	28.1%	17	56	320
Nov 6, 2017	111	19	17.1%	171	19	11.1%	18	35	282
Nov 20, 2017	72	2	2.8%	96	11	11.5%	12	37	168
Dec 4, 2017	60	8	13.3%	81	17	21.0%	5	18	141
Dec 18, 2017	37	12	32.4%	61	15	24.6%	1	10	98
Jan 1, 2018	15	6	40.0%	33	15	45.5%	1	5	48
Jan 15, 2018	72	12	16.7%	152	26	17.1%	3	8	224
Jan 29, 2018	99	14	14.1%	175	35	20.0%	4	9	274
Feb 12, 2018	106	16	15.1%	172	26	15.1%	7	18	278

### New Listing Market Watch (percentage of new listings in contract within 14 days)

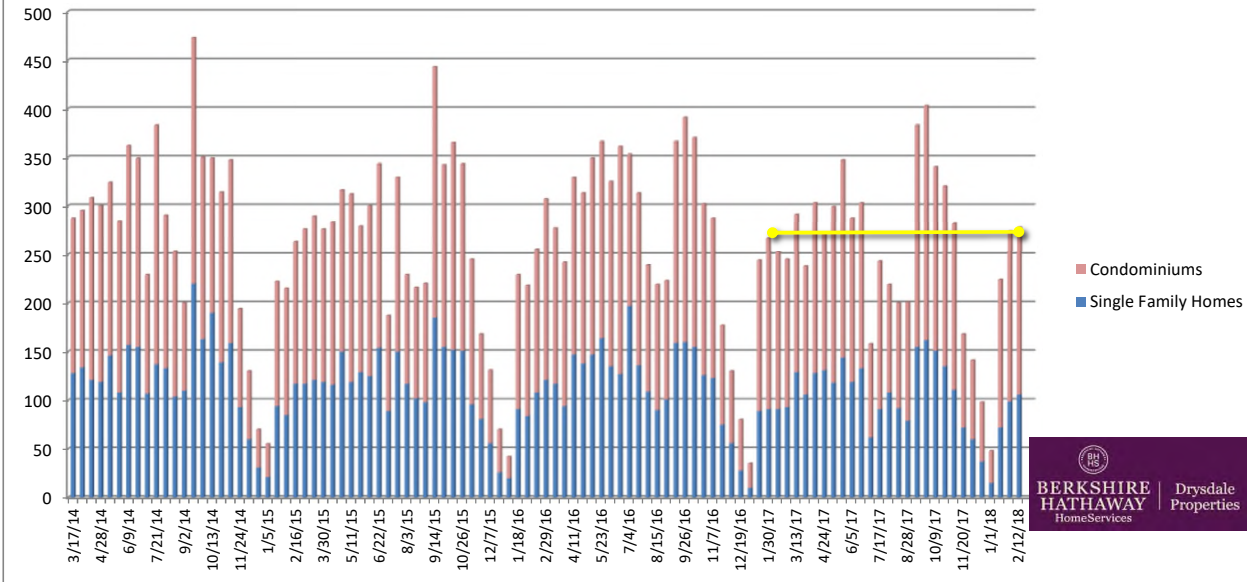


### Number of New Listings in San Francisco as reported every two weeks on the SFMLS



### New Listings for Preceding Two Weeks

*San Francisco Single Family Homes and Condos*



### San Francisco Price Reductions

