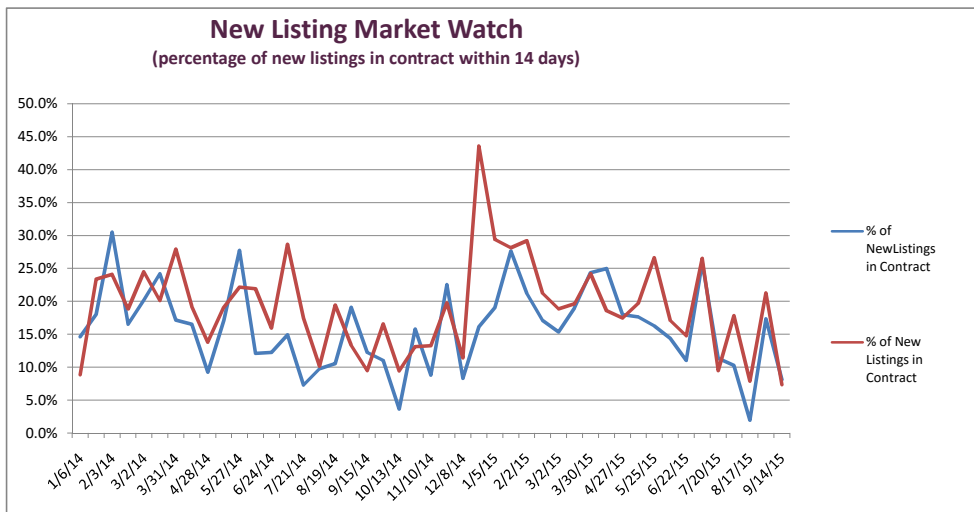


New Listing Market Watch

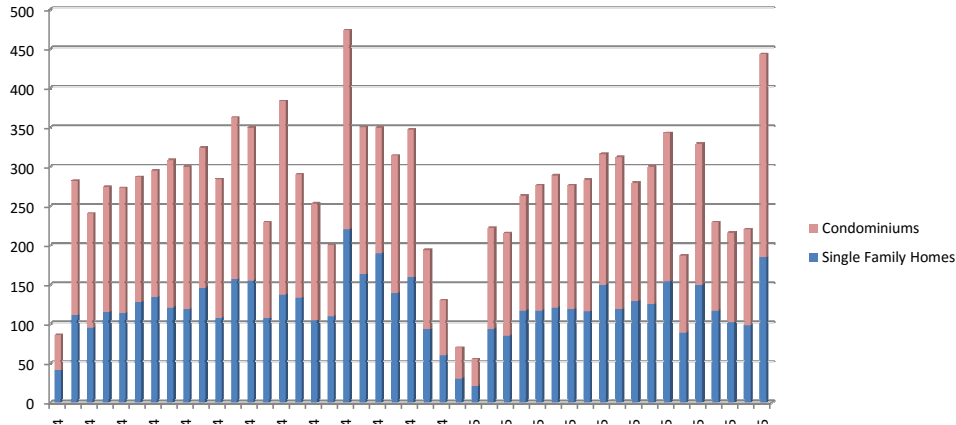
14 Day Period through date	Single Family Homes			Condominiums			Price Reductions		Total New Listings
	New Listings	New Listings in Contract	% of New Listings in Contract	New Listings	New Listings in Contract	% of New Listings in Contract	Single Family Homes	Condos	
Jan 6, 2014	41	6	14.6%	45	4	8.9%	2	3	86
Jan 20, 2014	111	20	18.0%	171	40	23.4%	11	11	282
Feb 3, 2014	95	29	30.5%	145	35	24.1%	9	9	240
Feb 17, 2014	115	19	16.5%	159	30	18.9%	6	5	274
Mar 2, 2014	114	23	20.2%	159	39	24.5%	8	9	273
Mar 17, 2014	128	31	24.2%	159	32	20.1%	9	13	287
Mar 31, 2014	134	23	17.2%	161	45	28.0%	13	11	295
Apr 15, 2014	121	20	16.5%	187	36	19.3%	10	12	308
Apr 28, 2014	119	11	9.2%	181	25	13.8%	8	17	300
May 12, 2014	146	25	17.1%	178	34	19.1%	4	15	324
May 27, 2014	108	30	27.8%	176	39	22.2%	15	23	284
Jun 9, 2014	157	19	12.1%	205	45	22.0%	11	18	362
Jun 24, 2014	155	19	12.3%	194	31	16.0%	10	22	349
Jul 8, 2014	107	16	15.0%	122	35	28.7%	15	17	229
Jul 21, 2014	137	10	7.3%	246	43	17.5%	15	30	383
Aug 4, 2014	133	13	9.8%	157	16	10.2%	8	23	290
Aug 19, 2014	104	11	10.6%	149	29	19.5%	16	20	253
Sep 2, 2014	110	21	19.1%	90	12	13.3%	15	7	200
Sep 15, 2014	220	27	12.3%	253	24	9.5%	18	31	473
Sep 30, 2014	163	18	11.0%	187	31	16.6%	27	18	350
Oct 13, 2014	190	7	3.7%	159	15	9.4%	40	26	349
Oct 27, 2014	139	22	15.8%	175	23	13.1%	33	37	314
Nov 10, 2014	159	14	8.8%	188	25	13.3%	50	39	347
Nov 24, 2014	93	21	22.6%	101	20	19.8%	13	20	194
Dec 8, 2014	60	5	8.3%	70	8	11.4%	8	10	130
Dec 22, 2014	31	5	16.1%	39	17	43.6%	5	1	70
Jan 5, 2015	21	4	19.0%	34	10	29.4%	6	3	55
Jan 19, 2015	94	26	27.7%	128	36	28.1%	6	4	222
Feb 2, 2015	85	18	21.2%	130	38	29.2%			215
Feb 16, 2015	117	20	17.1%	146	31	21.2%	4	8	263
Mar 2, 2015	117	18	15.4%	159	30	18.9%	14	11	276
Mar 16, 2015	121	23	19.0%	168	33	19.6%	10	5	289
Mar 30, 2015	119	29	24.4%	157	38	24.2%	9	12	276
Apr 13, 2015	116	29	25.0%	167	31	18.6%	11	13	283
Apr 27, 2015	150	27	18.0%	166	29	17.5%	9	11	316
May 11, 2015	119	21	17.6%	193	38	19.7%	9	14	312
May 25, 2015	129	21	16.3%	150	40	26.7%	5	24	279
Jun 8, 2015	125	18	14.4%	175	30	17.1%	15	17	300
Jun 22, 2015	154	17	11.0%	189	28	14.8%	12	20	343
Jul 6, 2015	89	23	25.8%	98	26	26.5%	11	18	187
Jul 20, 2015	150	17	11.3%	179	17	9.5%	11	14	329
Aug 3, 2015	117	12	10.3%	112	20	17.9%	9	12	229
Aug 17, 2015	102	2	2.0%	114	9	7.9%	20	13	216
Aug 31, 2015	98	17	17.3%	122	26	21.3%	13	8	220
Sep 14, 2015	185	15	8.1%	258	19	7.4%	14	16	443



14 Day period ending

New Listings for Preceding Two Weeks

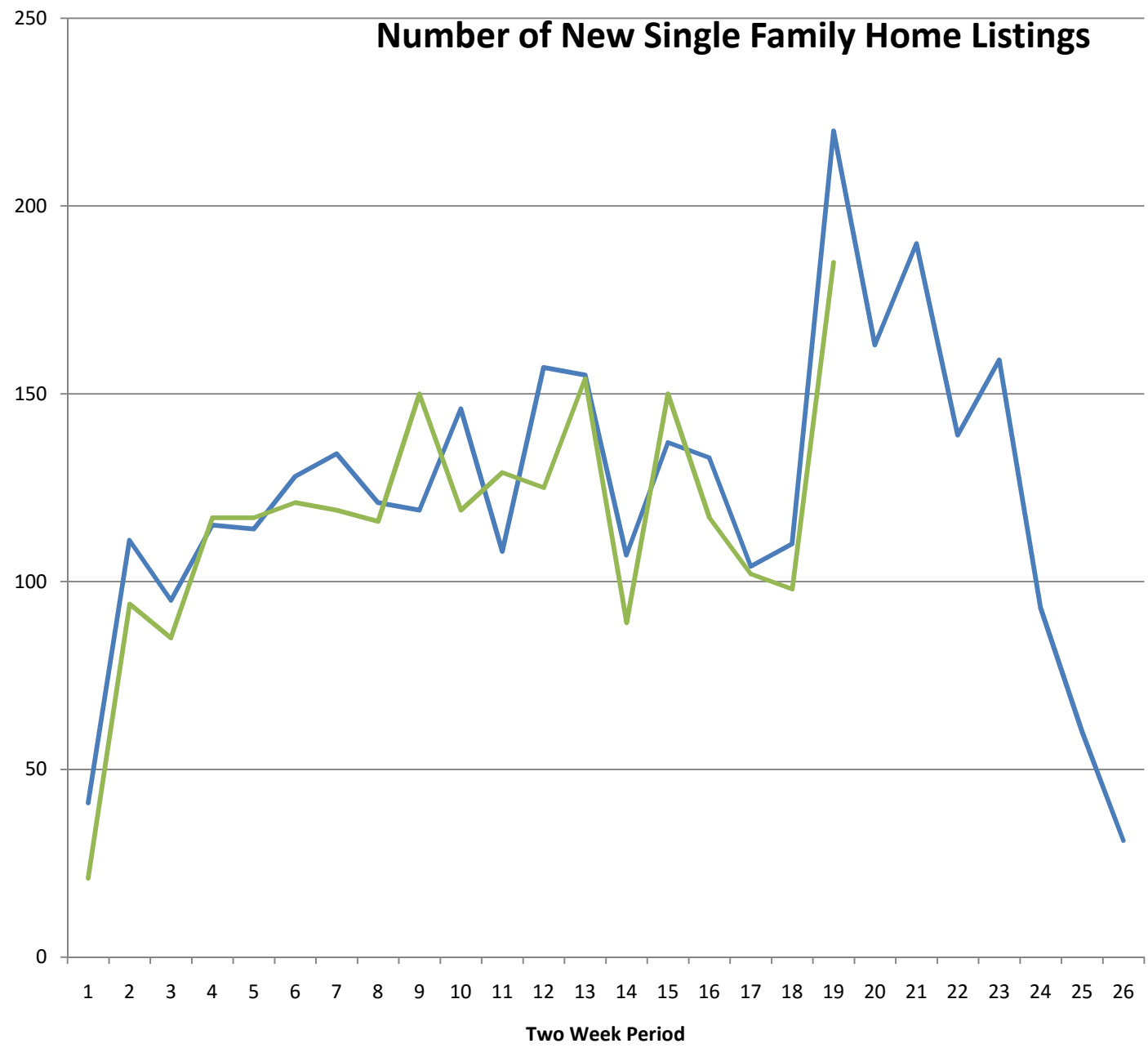
San Francisco Single Family Homes and Condos



Price Reductions

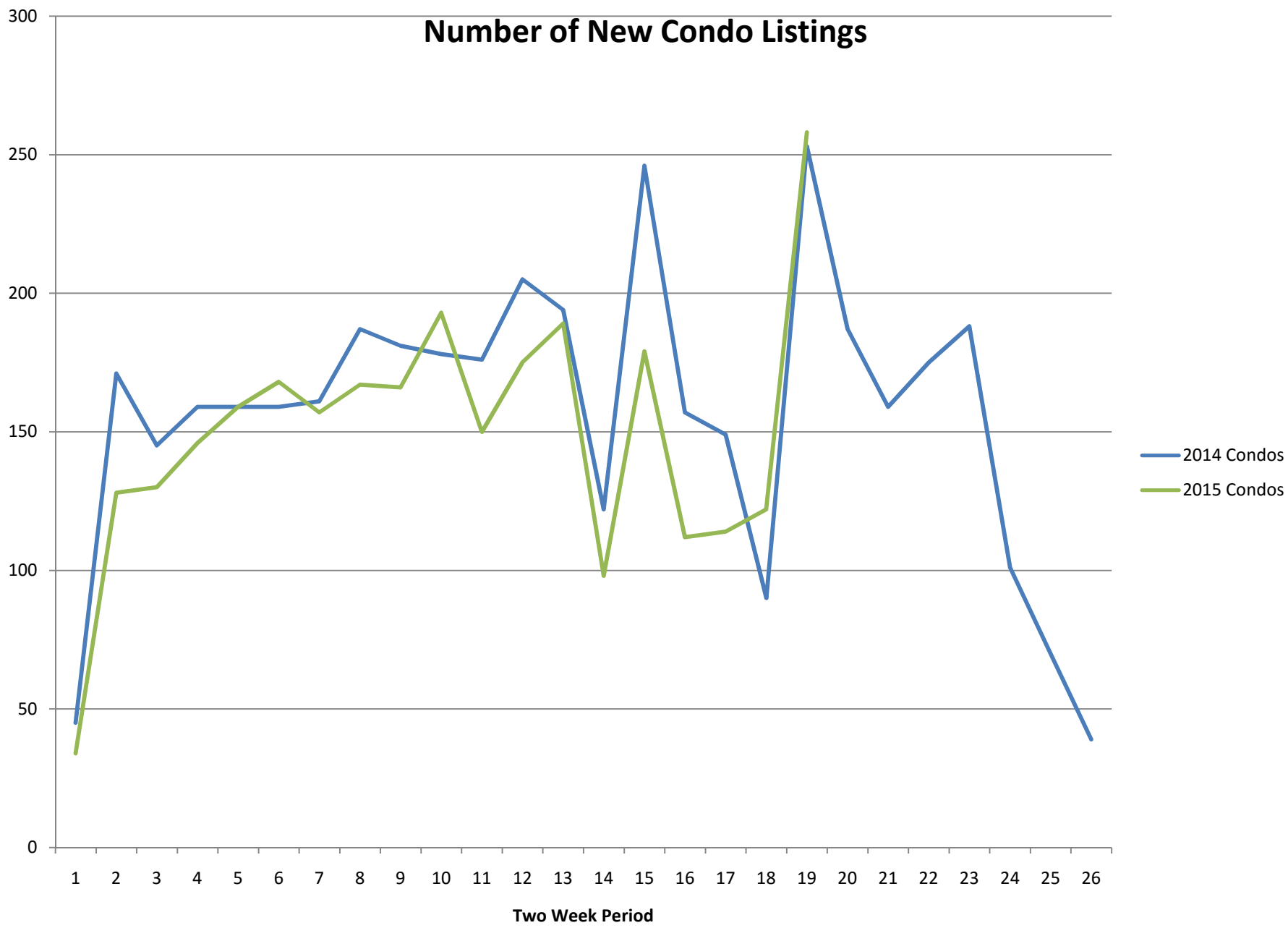


Number of New Single Family Home Listings



— 2014 Single Family Homes
— 2015 Single Family Homes

Number of New Condo Listings



New Listings

(Single family homes and condos)

